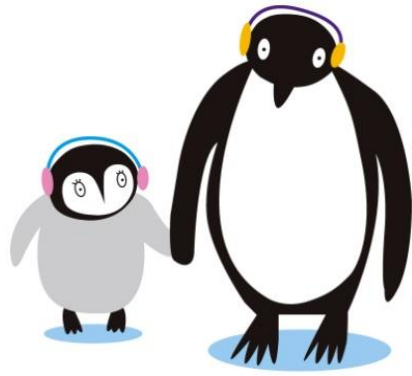


How to Enroll a Child in Public Nursery School (*Hoiku-sho*)

Apply at the City/Ward Welfare Office or a Nursery School with documentation of the reason why day care is necessary (e.g. parents' employment certificate, school certificate), and a document stating annual income (e.g. withholding certificate).



Inquiries

Kyoto City Official Website

Applying for Public Nursery Schools (In Japanese)

HP: <http://www.city.kyoto.lg.jp/menu3/category/47-6-1-0-0-0-0-0-0-0.html>

* A Nursery School (*Hoiku-sho*) is a child welfare facility that looks after infants and toddlers whose parents have a special need due to work or illness. Reasons such as wishing to provide preschool education or help prepare children for their transition into a school environment are not sufficient for entry. Children under 1 year of age to pre-elementary may be accepted, depending on the individual facilities. The fees are determined according to the parents' income.

Useful Links

Kyoto City International Foundation

"Easy Living in Kyoto -5.Childbirth and Raising Children"

<http://www.kcif.or.jp/HP/guide/newlife/en/ikuji.html>

Council of Local Authorities for International Relations

"Multilingual Living Information-Childbirth/Childcar"

<https://www.clair.or.jp/e/multiculture/index.html>

Kyoto University

"Handbook for International Researchers"

<https://www.kyoto-u.ac.jp/en/about/publications/handbook-for-international-researchers.html>

