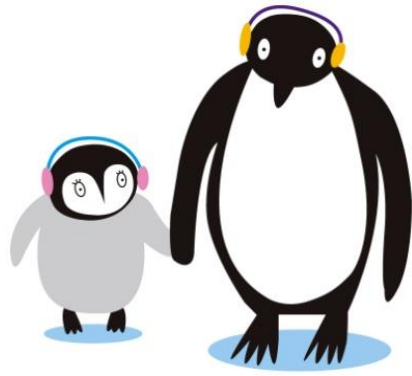


## How to Enroll a Child in Public Nursery School (*Hoiku-sho*)

Apply at the City/Ward Welfare Office or a Nursery School with documentation of the reason why day care is necessary (e.g. parents' employment certificate, school certificate), and a document stating annual income (e.g. withholding certificate).



Inquiries

### **Kyoto City Official Website**

Applying for Public Nursery Schools (In Japanese)

HP: <https://www.city.kyoto.lg.jp/hagukumi/page/0000054110.html>

\* A Nursery School (*Hoiku-sho*) is a child welfare facility that looks after infants and toddlers whose parents have a special need due to work or illness. Reasons such as wishing to provide preschool education or help prepare children for their transition into a school environment are not sufficient for entry. Children under 1 years of age to pre-elementary may be accepted, depending on the individual facilities. The fees are determined according to the parents' income.

---

## Useful Links

### **Kyoto City International Foundation**

"Easy Living in Kyoto -5.Childbirth and Raising Children"

<https://www.kcif.or.jp/web/en/livingguide/childcare/>

### **Council of Local Authorities for International Relations**

"Multilingual Living Information-Childbirth/Childcar

<https://www.clair.or.jp/e/multiculture/index.html>

### **Kyoto University**

"Handbook for International Researchers"

<https://www.kyoto-u.ac.jp/en/about/publications/handbook-for-international-researchers>

